

Clinical Trial Solutions | Partnering to Advance Therapeutic Innovation

Our Story

For more than 40 years, we have provided complex testing for clinical research. We're dedicated to helping further our client's translational research by providing high quality, accurate results across multiple phases of clinical drug development. We're driven to partner with you to solve challenging scientific problems, complementing your strategies with broad scientific expertise and industry recognized assay development skills, to accelerate new therapies from bench to market.

Our Expertise

- Over 900 studies supported in the last five years, spanning early clinical/phase I through phase IV.
- Highest quality cGMP storage solutions ranging from CRT to LN2, including controlled substance schedules I to V.
- Supporting all therapeutic areas, with a special focus on oncology, cell/gene therapy, infectious disease & immunology.

Our Science

- With deep expertise in NGS and other molecular assays, our innovative team of R&D scientists leverage cutting edge technologies to achieve study objectives.
- We specialize in regulated PK/TK, ADA, NAb, biomarker assays, method development validation and analysis.
- Our global central laboratory network develops and runs assays in CAP/CLIA and GCLP regulatory frameworks, including pathology.

Our Reach

Clinical Trial Solutions supports multi-center, multi-country studies in over 85 countries. With dedicated testing, packaging & storage facilities in the USA, Europe & Asia, and access to the broader Eurofins network, we can support your study needs from end to end.

Our Platforms

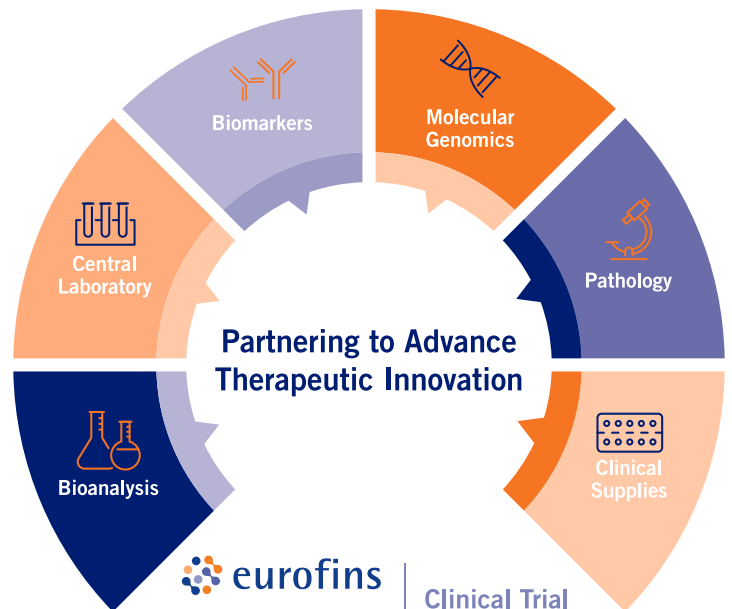
As a dedicated laboratory service provider, we leverage 17 industry-leading analytical platforms to provide the most accurate data for your biotherapeutic project.

We regularly evaluate new technology platforms to align with our partners' needs. Contact us to discuss your platform needs if it's not listed on the back of this document.

Why Choose Us?

Complex innovative clinical trial designs require an integrated synergetic approach to assess novel drug compounds for safety and effectiveness which often span esoteric, regulated, and safety outcomes in all phases of the drug development life-cycle.

The companies of Eurofins Clinical Trial Solutions provide a seamless, solutions-based approach to your drug development project, including packaging, labeling, and global distribution of Investigational Medicinal Products (IMPs).



Specialized Expertise in Complex Clinical Research

Eurofins Clinical Trials Solutions capabilities:

- Allergy Testing
- Anti-Drug Antibody (ADA) Assays
- Bioinformatics Services
- Biomarkers (CAP, GCLP, and GLP)
- Cell & Gene Therapy Assays
- Cell-based Assays
- Chemistry / Immunochemistry
- Clinical Supplies / Kit Build
- Coagulation Testing
- ELISpot Assays
- Endocrinology Assays
- Flow Cytometry (standardized globally)
- Gene Expression Assays
- Genomics Assays
- Hematology Testing
- Immunogenicity Assays
- Immunohistochemistry (IHC)
- Immunology Assays
- Liquid Chromatography-Mass Spectrometry (LC-MS)
- Molecular Diagnostics
- Neutralizing Antibody (NAb) Assays
- Pathology Services (histology, cytology, anatomical pathology)
- PBMC Processing Network
- PCR Assays (qPCR, RT-qPCR, and ddPCR)
- Pharmacokinetic (PK) Assays
- Respiratory Pathogen Testing Services
- Sequencing Assays (Sanger, NGS, WGS, WES, RNASeq)
- Spectrophotometry
- Vaccine Clinical Trial Testing

For more information, please contact
clinicaltrialsolutions@bcl.eurofins.com



Eurofins Clinical Trial Solutions platforms:

Ligand Binding & Chromatographic Assays

- Plate Readers: Behring (Siemens), BioTek, DYNEX®, EnSight™, EnVision™, SpectraMax®
- EIIa™
- Gyrolab®
- Luminex® – 100, 200, MAGPIX
- MSD® – QuickPlex SQ 120, S 600
- Sciex API 4000™
- Shimadzu LC
- Singulex®

Nucleic Acid & cell-based Assays

- ABI 3730XL Sanger Sequencer
- ABI 7500 Fast
- BioFire® FilmArray PCR
- Bio-Rad QX200 ddPCR
- Cepheid GeneXpert®
- ELISpot: CTL ImmunoSpot® S3, S6/Ultimate M2
- Flow Cytometry: BD FACSymphony™ A5SE, Lyric™, Canto™ II, NovoCyte Quanteon
- Illumina – MiSeq, NextSeq™, NovaSeq™
- nanoString nCounter®
- QuantStudio™ 5 & 7 Pro
- Revvity Celigo™
- Roche cobas® / Genmark ePlex®
- Roche cobas® 6800

Automation

- Beckman Coulter Biomek i7
- Bio-Rad Variant II
- BioStore™ III Cryo storage (LN2)
- Diasorin Liaison® XL
- DNA/RNA Extraction: MagNA Pure, KingFisher™ Flex, NucliSENS easyMag®, EMAG®, QIAcube
- Formulatrix MANTIS®
- GSD Thunderbolt®
- Hamilton BIOS XL4 ULT
- IRIS iQ200
- NOVA View® Automated IFA Reader
- PBMC Isolation (including automated cell counting)
- Phadia ImmunoCAP™ 100, 250
- Roche cobas® 6000 / 8000 C/E Modules, cobas® Pro
- Siemens BN ProSpec, ADVIA Centaur® XP, Atellica® IM
- Sysmex CS2500, CS5100
- Tecan Freedom EVO®

